



# **FGDC Cadastral Subcommittee Records for Found Section Corners**

---

**6/23/05**

**Stafford Binder**


**U.S. Department of the Interior  
U.S. Geological Survey**

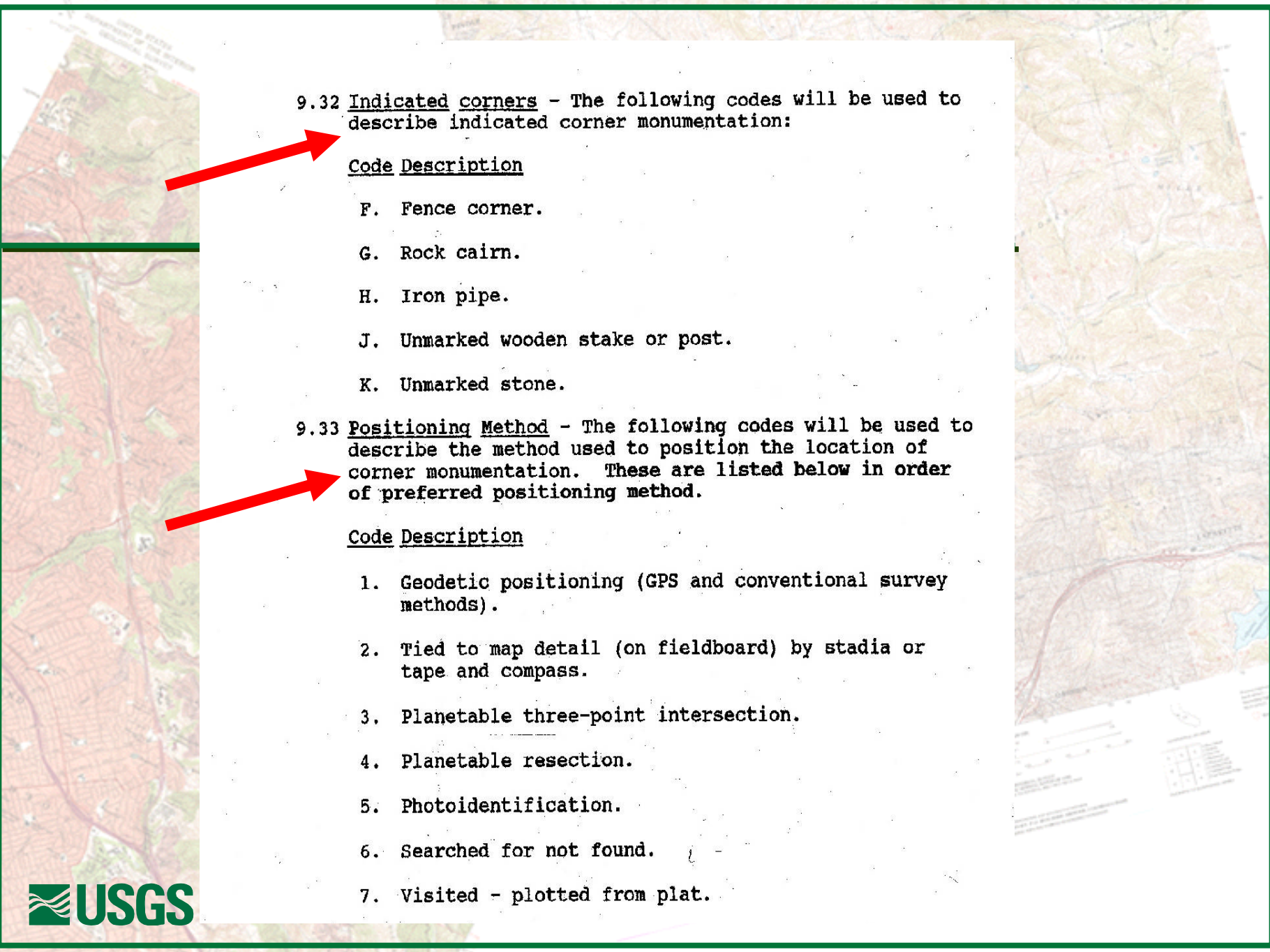
# Section Corner Codes

- Used by Western Mapping Center and Rocky Mountain Mapping Center
- Codes used by Mid-Continent Mapping Center for the central states are different than those in the western states
- Abbreviate what type of corner was found and the method used for positioning

9.31 Found corners - The following codes will be used to describe found corner monumentation:

Code Description

- 
- A. Pits and mounds with buried durable material, i.e., buried charcoal, buried glass, etc.
  - B. A scribed wooden stake or post.
  - C. A scribed set stone, or mark on stone, in place.
  - D. An iron post with a BLM or GLO inscribed cap; a marked tablet set in a concrete post or solid rock; other agency monumentation for surveys accepted by BLM.
  - E. A scribed section corner tree.
  - L. Corner location referenced by a bearing tree.
  - M. Any monumentation not accepted by BLM, established by private surveyor or governing agency.



9.32 Indicated corners - The following codes will be used to describe indicated corner monumentation:

Code Description

- F. Fence corner.
- G. Rock cairn.
- H. Iron pipe.
- J. Unmarked wooden stake or post.
- K. Unmarked stone.

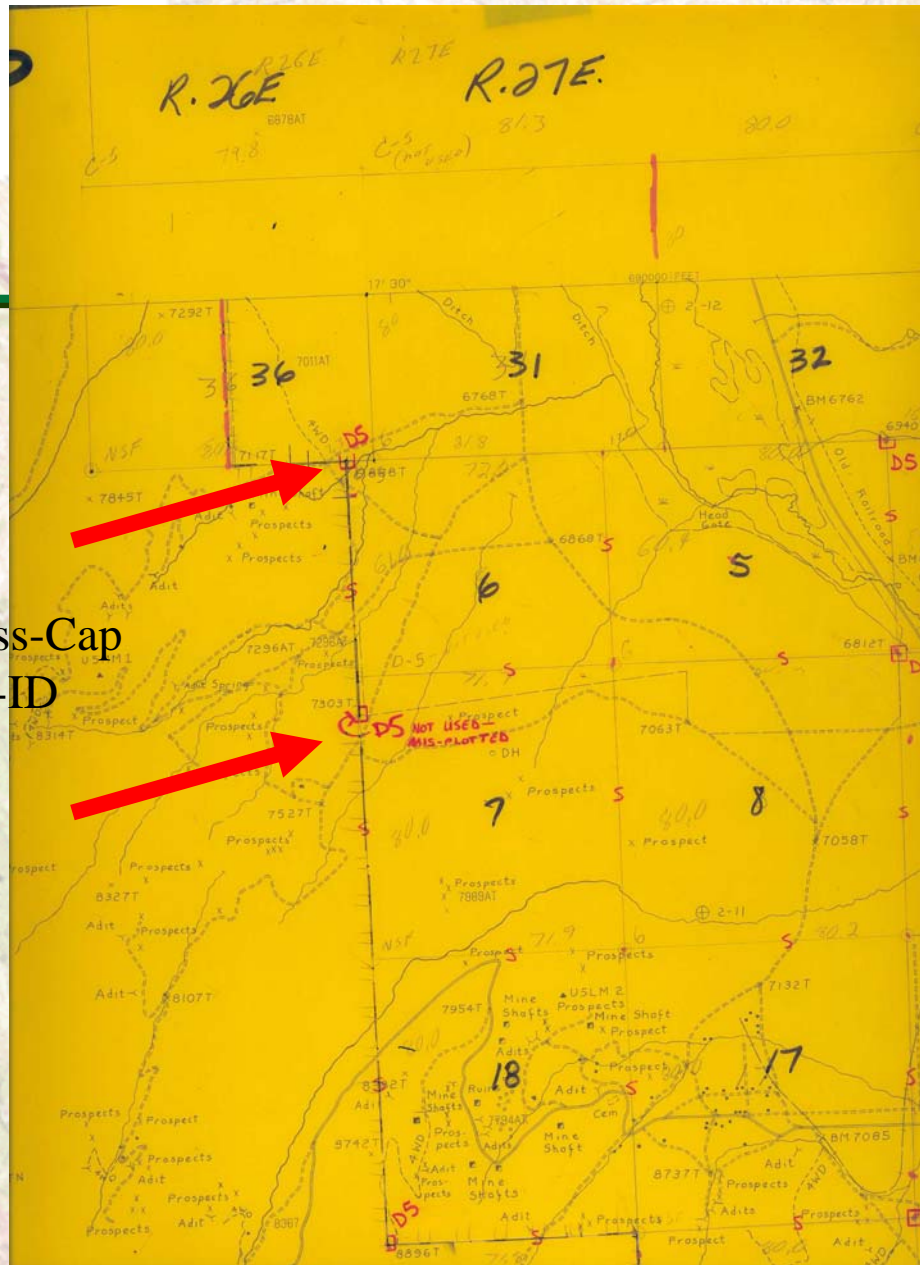
9.33 Positioning Method - The following codes will be used to describe the method used to position the location of corner monumentation. These are listed below in order of preferred positioning method.

Code Description

1. Geodetic positioning (GPS and conventional survey methods).
2. Tied to map detail (on fieldboard) by stadia or tape and compass.
3. Planetable three-point intersection.
4. Planetable resection.
5. Photoidentification.
6. Searched for not found.
7. Visited - plotted from plat.

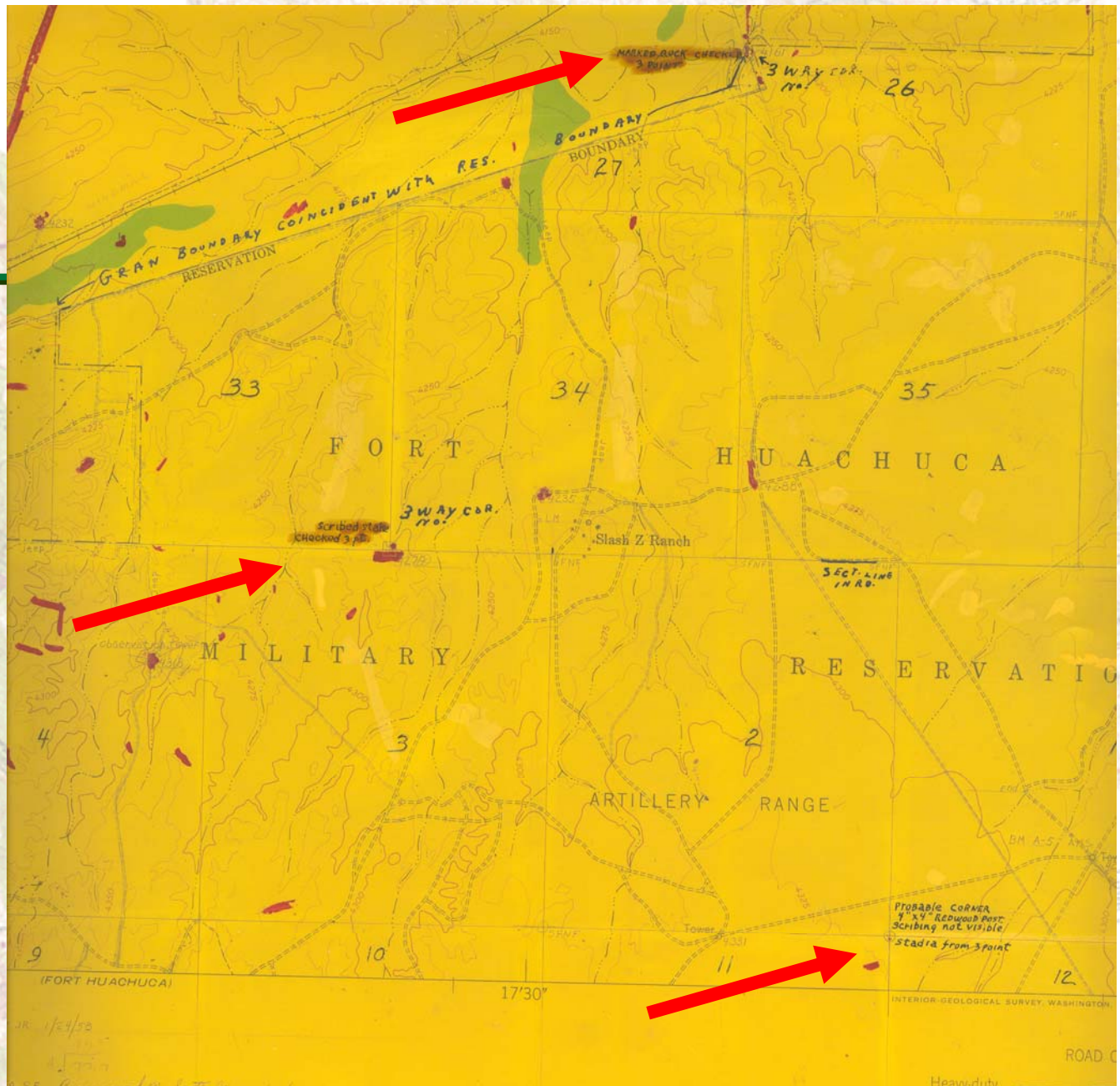
# Field Boards

- Section corner identification using plane tables and alidades
- Manuscripts upon which additions and deletions were made
- This method was in practice until roughly 1970
- Codes or descriptions were written on the field boards as to what was found at a corner location.



D5 – Brass-Cap  
Photo-ID

Rock and Post  
Descriptions w/o  
Codes

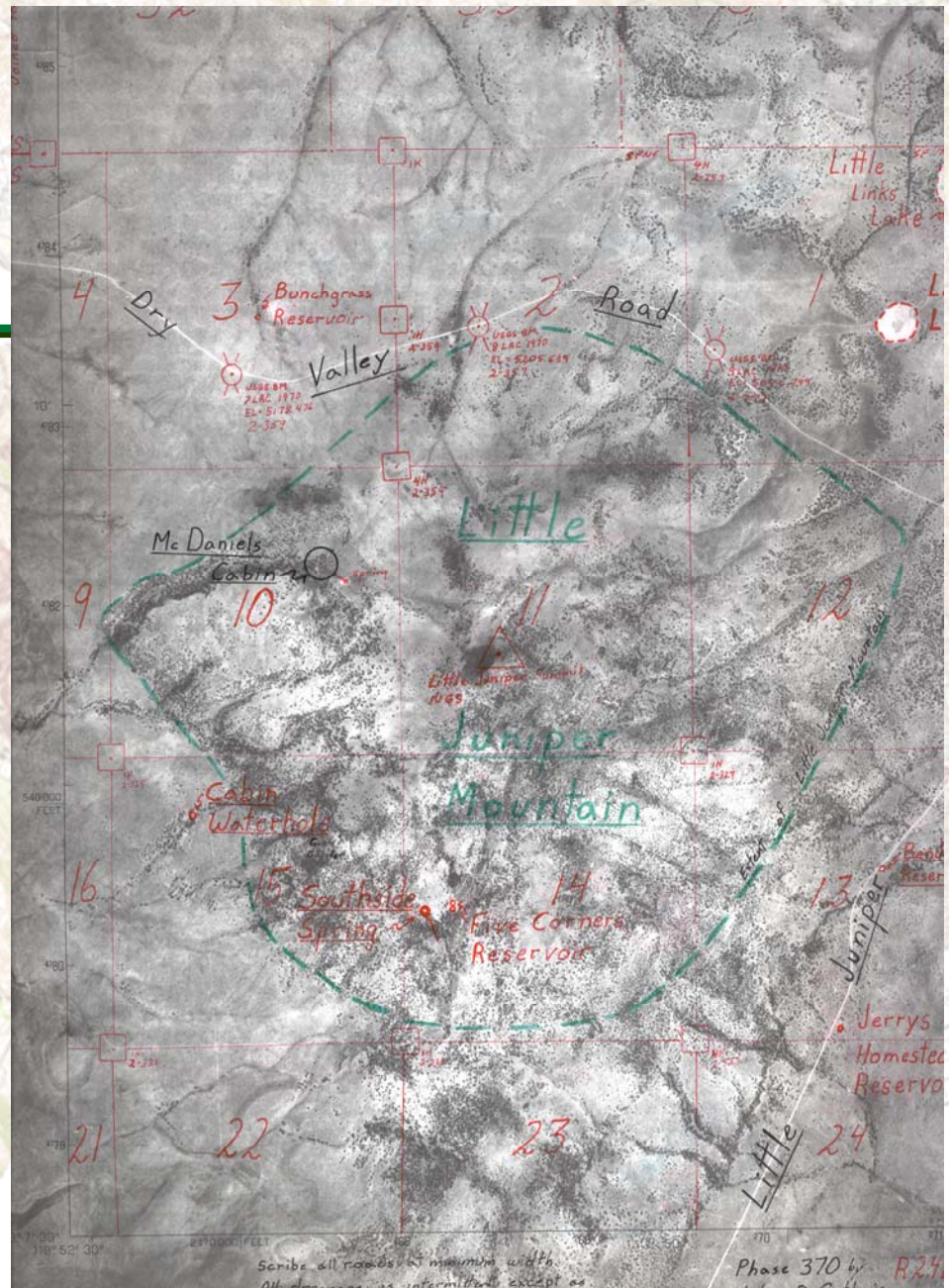


# Information Sheets

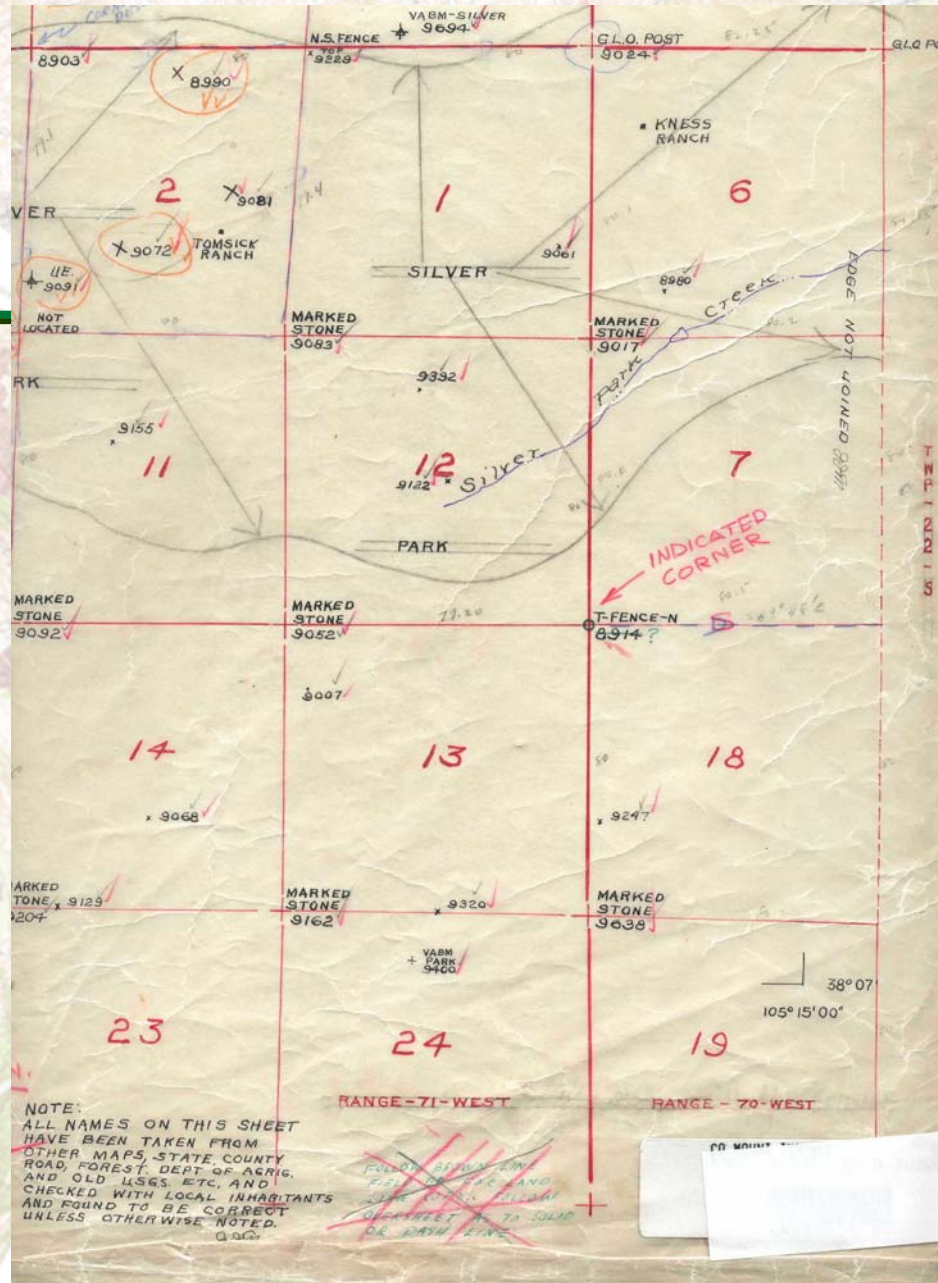
---

- A means by which field personnel could summarize names, features, landlines, boundaries, in a graphic format
- Section corner information could be written out or coded depending on the mapping center doing the original work

N&I on Ortho Base  
Brass-Cap Survey  
Various Identification  
Methods



Paper N&I Sheet  
Scribed Set-Stone  
Survey  
No PLSS Codes

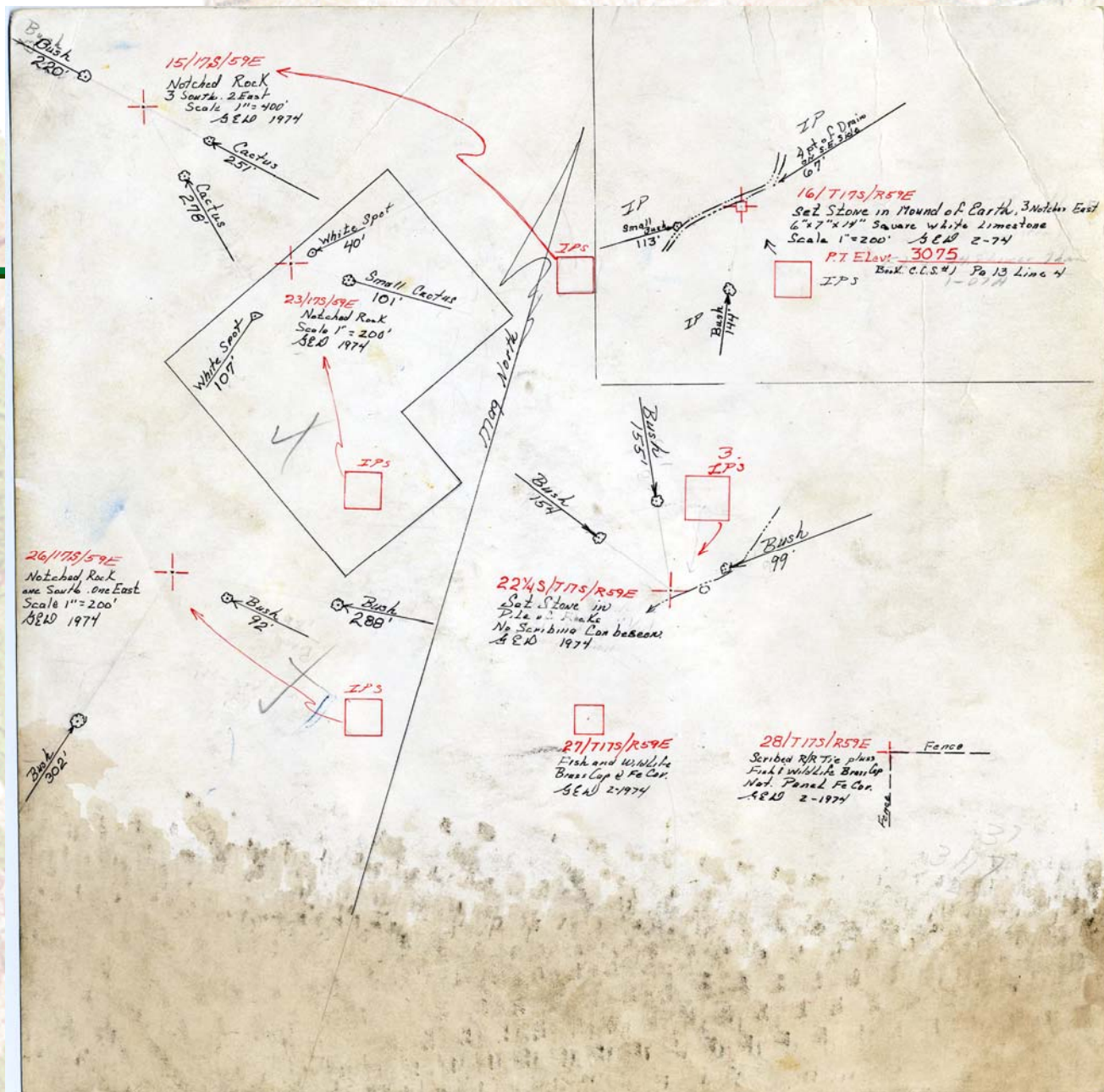


# Photo-Identification

- The principal means by which section corners were identified from approximately 1970 onward.
- Photo-images were pinholed on the mapping aerial photos and sketches drawn on the back of the photos tying the corner location to the imagery.
- Codes or descriptions were written alongside the sketch and also summarized on the Information Sheet.



Back of Photo



# Quad Reports

- A field narrative in which the field personnel would mention anything out of the ordinary that would need to be addressed by subsequent mapping phases

Phase 370 by  
COMMENTS David B. Kohn Sept.-Nov. 1981  
Lake Abert, 1 NE

(Advance Field Completion)- Field Completion

Basic Control (H) There are no monumented horizontal stations on this quad.

(V) A portion of NGS (1920) Line 4 runs N-S through this quad. BM P17 was SFNF. Other marks have been redescribed. A 1981 third order line ties into the NGS line and runs NW through the quad. There is an OSHD level line on the east side of the quad (US 395). It is listed as not being third order. Some of the marks were hit on the fly level line along the highway, and were proved to be out by as much as 2 ft.. For this reason, some of these marks were not searched for. There were no 9-1165s typed, however their condition is listed in the control book (page 85).

Landlines and Boundaries T30S/R23E is comprised of four separate landline surveys--1884, 1916 partial, 1918 tract, and 1941 partial. Apparently the 1916 survey was independent, as there are both well monumented notched rocks and GLO brass caps that are roughly 50 ft. apart at some corners. The brass caps should be held; the notched rocks have been provided to show that they still exist, and their relative position. If any further information is needed, the survey notes should be obtained from BLM Portland as they were not provided to the field.

In this same township there is a Metes and Bounds survey of patented land in Secs 6 and 7. There is also a 1918 resurvey of the original Sec 16, making it Tract 37. TRACT 37 IS ON THE QUAD TO THE EAST OF THIS QUAD.

In Secs 12 and 13 T30S/R22E there is a meander around Alkali Lake. A sufficient number of corners have been found on this quad to provide a strong buildup.

There are no boundaries on this quad.

LJM BCUELL 9-1-83

QUAD.  
LJM  
1-1-84



# PLSS Information Availability

- This type of information is available for each 7.5-Minute quadrangle in PLSS States

# Access to USGS' PLSS Information

- States west of and including
  - Texas
  - Colorado
  - Wyoming
  - Montana
- Dale Benson
  - 303-202-4394

# Access to USGS' PLSS Information

- States east of and including
  - Louisiana
  - Oklahoma
  - Kansas
  - Nebraska
  - N & S Dakota
- James (Terry) Felkerson
  - 573-308-3725